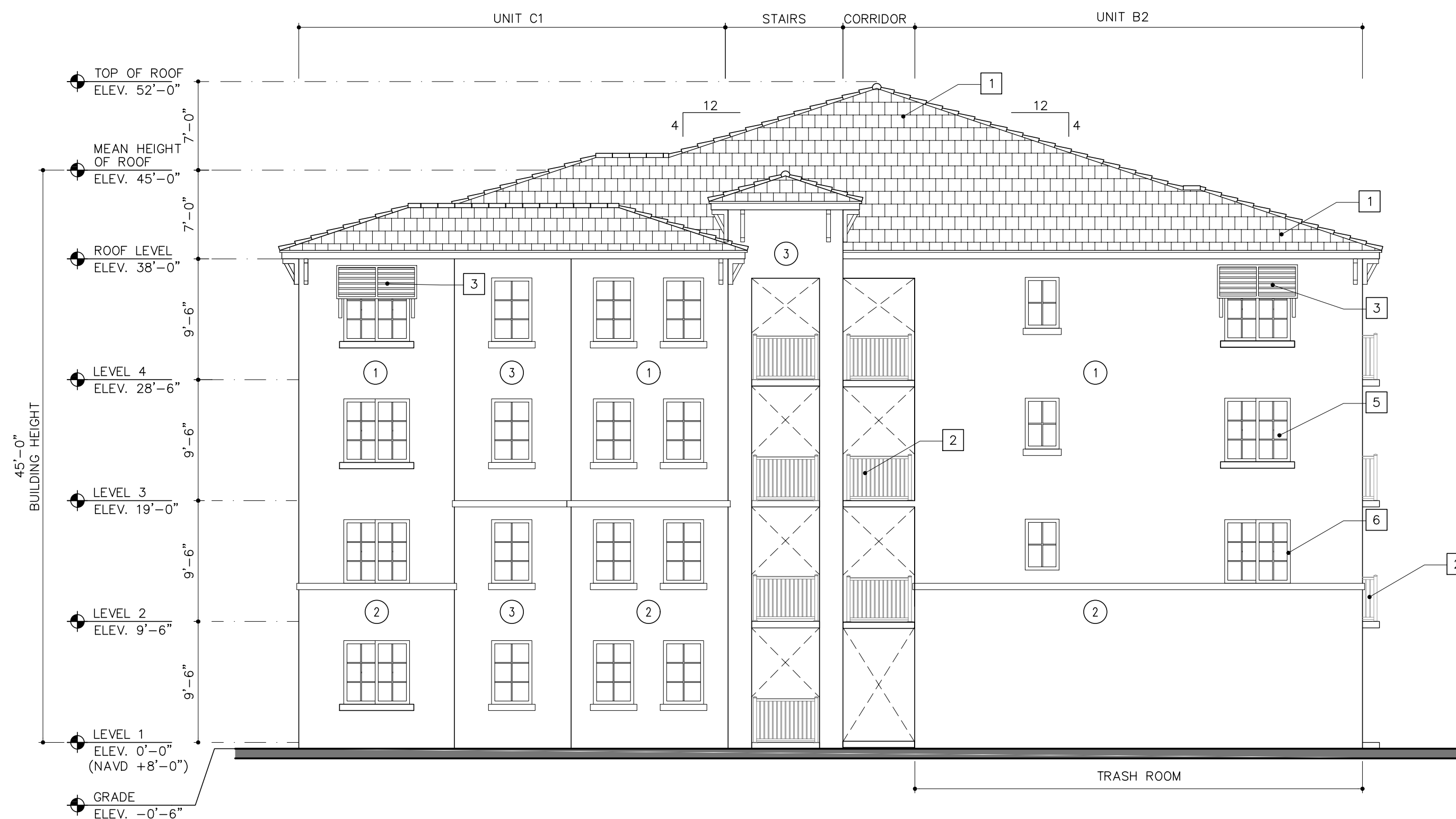


3 REAR ELEVATION
(SOUTH ELEVATION)



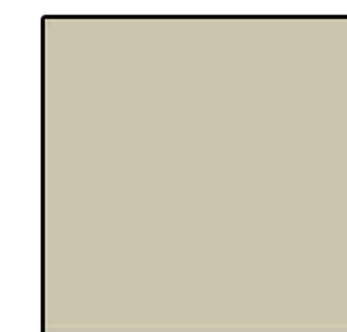
4 LEFT ELEVATION
(WEST ELEVATION)

COLOR SCHEME



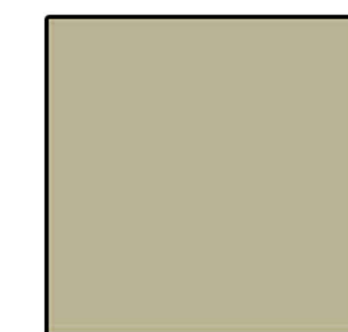
MAIN STUCCO
SW 7006
EXTRA WHITE

1



ACCENT 1
SW 7738
CARGO PANTS

2



ACCENT 2
SW 7727
KOI POND

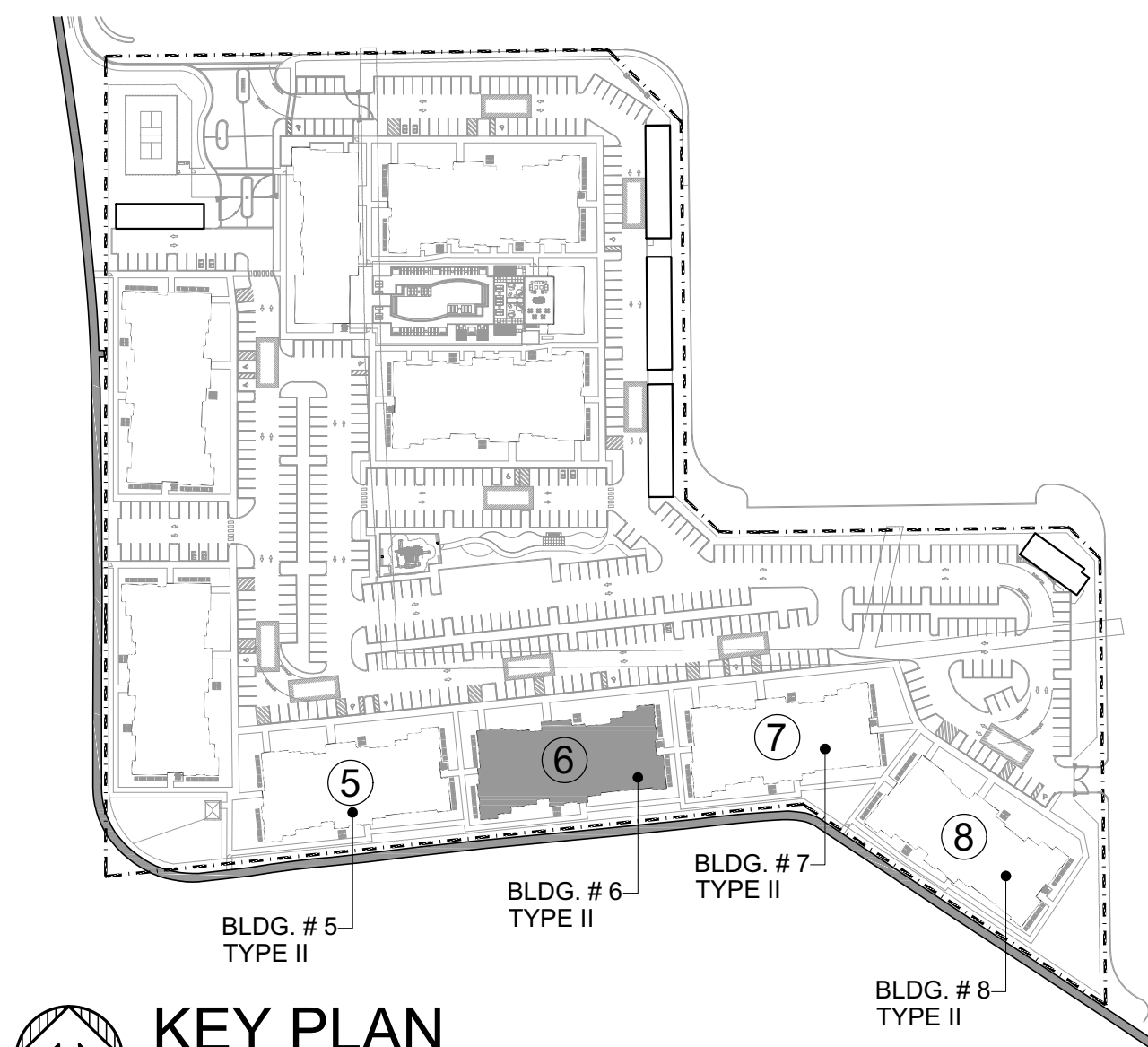
3



STONE
CASTAWAY

4

- BUILDING MATERIAL SPECIFICATION
- 1 FLAT TILE ROOF (BLACK)
 - 2 RAILINGS (DARK BRONZE)
 - 3 AWNINGS (DARK BRONZE)
 - 4 SHUTTERS (DARK BRONZE)
 - 5 GLAZING (GREY)
 - 6 WINDOW/DOOR FRAMES (DARK BRONZE)



KEY PLAN

TYPE II BUILDING 6 - ELEVATIONS

SCALE: 1/8"=1'-0"

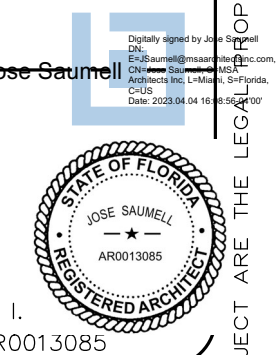
AAC
PZ21-12000042
05/02/2023

INITIAL SITE PLAN SUMMITTAL
12/17/2021

BY

POMPAÑO CITI CENTRE

FOR:
MORGAN GROUP
LOCATED AT:
POMPAÑO BEACH, FLORIDA



MSA ARCHITECTS, INC.
AAAC000895

8850 SW 74th COURT
SUITE 103
MIAMI, FLORIDA 33156
(305) 273-9911

MSA
ARCHITECTS
ARCHITECTURE & PLANNING

ARCHITECT'S BUILDING CODE STATEMENT/ TO THE BEST OF THE ARCHITECT'S KNOWLEDGE THE PLANS AND SPECIFICATIONS COMPLY WITH THE FLORIDA BUILDING CODE SIXTH EDITION (2017) AND THE APPLICABLE FIRE SAFETY STANDARDS AS DETERMINED BY THE LOCAL AUTHORITY AND CHAPTER 633 FLORIDA

DRAWN
CONTRACT DATE 03/03/2020
SCALE AS SHOWN
JOB NO. 1880.PRJ

SHEET TITLE:
TYPE II BUILDING 6 -
ELEVATIONS

SHEET NUMBER:
A-3.2.4